

Instruction Manual



English

A16X Series

Professional
High Definition Car DVR

Contents

PRECAUTIONS.....2

PRODUCT SPECIFICATIONS.....3

PACKAGE CONTENTS.....5

PRODUCT FEATURES.....6

CONTROLS.....7

INSTALLATION8

 INSERTING THE MEMORY CARD8

 INSTALLING IN VEHICLES9

VIDEO MODE.....13

 NORMAL RECORDING.....14

 EMERGENCY RECORDING (FILE PROTECTED).....14

 AUTO REPAIR14

PLAYBACK MODE15

 PLAYING VIDEOS15

 VIEWING PHOTOS.....16

MENU AND SETTINGS.....17

 MENU OPTIONS17

 UPDATING THE FIRMWARE19

PC CONNECTION20

 REVIEWING GPS LOG20

TROUBLESHOOTING22

PRECAUTIONS

Please read this manual carefully before operation and keep it for future reference. It will be helpful should you encounter any operational problem.

WARNING: Do not expose this product to rain, moisture or water under any circumstances, doing so may result in the risk of electric shock of fire.

CAUTION: To reduce the risk of electric shock, do not perform and servicing other than that contained in the instruction manual unless you are qualified to do so.

- Have the unit serviced by a qualified service technician if; The Unit has been exposed to rain or water.
- The unit does not seem to operate normally.
- The unit exhibits a marked changes in performance.

LCD: A Liquid Crystal Display (LCD) screen is a multilayer complex component, containing 691,200 pixels. Pixels can however fail during normal product life. 1 pixel = 0.00014% failure rate, and one pixel failures per year of operation is considered normal and not a cause for concern.

WEEE: Disposal of Waste Electrical and Electronic Equipment and/or Battery by users in private households in the European Union.



This symbol on the product or on the packaging indicates that this can not be dispose of as household waste. You must dispose of your waste equipment and/or battery by handing it over to the applicable take-back scheme for the recycling of electronic equipment and/or battery. For more information please contact your local household waste disposal office

**DO NOT ATTEMPT TO SERVICE THE UNIT BY YOURSELF!
THE DEVICE WILL BECOME HOT DURING OPERATION. PLEASE AVOID
TOUCHING THE LENS DIRECTLY DURING OR AFTER USE.**

PRODUCT SPECIFICATIONS

Chip	<ul style="list-style-type: none"> • A160-NT96672 • A161-NT96675 • A163-NT96670 																												
CMOS Sensor	<ul style="list-style-type: none"> • A160: IMX307 2.0M • A161: IMX307 2.0M • A163: IMX415 8.0M • A16C: IMX307 2.0M • A16R: IMX307 2.0M 																												
Video Resolution	<ul style="list-style-type: none"> • A160: <table border="1" data-bbox="400 478 594 620"> <thead> <tr> <th>Single Channel</th> </tr> </thead> <tbody> <tr> <td>1920 x 1080P 30fps</td> </tr> <tr> <td>1280 x 720p 60fps</td> </tr> <tr> <td>1280 x 720p 30fps</td> </tr> </tbody> </table> • A161: <table border="1" data-bbox="400 667 791 842"> <thead> <tr> <th>Single Channel</th> <th>Dual Channel</th> </tr> </thead> <tbody> <tr> <td>1920 x 1080P 60fps</td> <td>1080P+1080P</td> </tr> <tr> <td>1920 x 1080P 30fps</td> <td>1080P+720P</td> </tr> <tr> <td>1280 x 720P 60fps</td> <td>720P+1080P</td> </tr> <tr> <td>1280 x 720P 30fps</td> <td>720P+720P</td> </tr> </tbody> </table> • A163: <table border="1" data-bbox="400 888 791 1134"> <thead> <tr> <th>Single Channel</th> <th>Dual Channel</th> </tr> </thead> <tbody> <tr> <td>3840 x 2160P 30fps</td> <td>1440P+1080P</td> </tr> <tr> <td>2560 x 1440P 30fps</td> <td>1080P+1080P</td> </tr> <tr> <td>1920 x 1080P 60fps</td> <td></td> </tr> <tr> <td>1920 x 1080P 30fps</td> <td></td> </tr> <tr> <td>1280 x 720P 60fps</td> <td></td> </tr> <tr> <td>1280 x 720P 30fps</td> <td></td> </tr> </tbody> </table> 	Single Channel	1920 x 1080P 30fps	1280 x 720p 60fps	1280 x 720p 30fps	Single Channel	Dual Channel	1920 x 1080P 60fps	1080P+1080P	1920 x 1080P 30fps	1080P+720P	1280 x 720P 60fps	720P+1080P	1280 x 720P 30fps	720P+720P	Single Channel	Dual Channel	3840 x 2160P 30fps	1440P+1080P	2560 x 1440P 30fps	1080P+1080P	1920 x 1080P 60fps		1920 x 1080P 30fps		1280 x 720P 60fps		1280 x 720P 30fps	
Single Channel																													
1920 x 1080P 30fps																													
1280 x 720p 60fps																													
1280 x 720p 30fps																													
Single Channel	Dual Channel																												
1920 x 1080P 60fps	1080P+1080P																												
1920 x 1080P 30fps	1080P+720P																												
1280 x 720P 60fps	720P+1080P																												
1280 x 720P 30fps	720P+720P																												
Single Channel	Dual Channel																												
3840 x 2160P 30fps	1440P+1080P																												
2560 x 1440P 30fps	1080P+1080P																												
1920 x 1080P 60fps																													
1920 x 1080P 30fps																													
1280 x 720P 60fps																													
1280 x 720P 30fps																													
Screen	2.0 inches screen																												
Video Code / Format	<ul style="list-style-type: none"> • H.264 • MP4 or TS 																												
Audio	Built-in Microphone/Speaker																												
Memory Card Capacity	MicroSD card, support up to 256GB (Not included in package)																												
G-Sensor	Supported																												
Parking Mode	Supported (Hardwire kit not included in package)																												
Loop Recording	Supported:1/2/3/5 minutes per segment																												

Backup Power Source	Super capacitor (No lithium battery) (Ensures all videos are written to the memory card on power failure)										
Working Temperature	-10°C ~ 60°C										
External Power Supply	5V 1.5A										
Voltage / Current	<ul style="list-style-type: none"> A160: <table border="1" style="margin-left: 20px;"> <thead> <tr> <th>Single Channel</th> </tr> </thead> <tbody> <tr> <td>Voltage: 5V Current: 240-280mA</td> </tr> </tbody> </table> A161: <table border="1" style="margin-left: 20px;"> <thead> <tr> <th>Single Channel</th> <th>Dual Channel</th> </tr> </thead> <tbody> <tr> <td>Voltage: 5V Current: 400-450mA</td> <td>Voltage: 5V Current: 600-650mA</td> </tr> </tbody> </table> A163: <table border="1" style="margin-left: 20px;"> <thead> <tr> <th>Single Channel</th> <th>Dual Channel</th> </tr> </thead> <tbody> <tr> <td>Voltage: 5V Current: 620-640mA</td> <td>Voltage: 5V Current: 840-880mA</td> </tr> </tbody> </table> 	Single Channel	Voltage: 5V Current: 240-280mA	Single Channel	Dual Channel	Voltage: 5V Current: 400-450mA	Voltage: 5V Current: 600-650mA	Single Channel	Dual Channel	Voltage: 5V Current: 620-640mA	Voltage: 5V Current: 840-880mA
Single Channel											
Voltage: 5V Current: 240-280mA											
Single Channel	Dual Channel										
Voltage: 5V Current: 400-450mA	Voltage: 5V Current: 600-650mA										
Single Channel	Dual Channel										
Voltage: 5V Current: 620-640mA	Voltage: 5V Current: 840-880mA										
Size	<ul style="list-style-type: none"> 75mm x 40mm x 25mm (without GPS bracket) 75mm x 40mm x 75mm (with GPS bracket) 										
Net Weight	60 g										

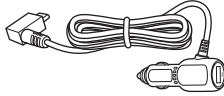
PACKAGE CONTENTS

Please check the contents of your Dash Cam product package. The actual products might appear slightly different from the pictures shown below.

Dash Cam
(Front camera)



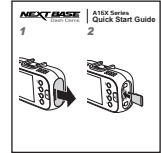
Car charger with Type-C
adapter



USB data cable



Quick start guide



GPS bracket with attached
3M adhesive sticker



Window Stickers (x2)



3M Adhesive Sticker

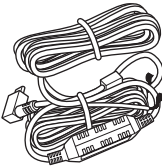


NOTE:

- Car charger with Type-C adapter is used for supplying power from the 12-24Vdc outlet of your vehicle.
- USB data cable is used for connection to a laptop/computer.

Optional accessories

Hardwire kit



Cabin Camera
(A16C)



Rear View Camera with 6m / 8m(optional, available in
some regions only) rear camera cable (A16R)



NOTE:

Hardwire kit is used for power connection to the fusebox instead of the 12-24Vdc outlet of your vehicle, which supports the *Parking Mode* function and car battery protection circuitry.

PRODUCT FEATURES

Thank you for purchasing this Nextbase™ Dash Cam product. In this section, we will outline some of the features available with this camera.

2.0” LCD Colour Screen

Large screen for ease of use for the camera configurations and viewing the playback of both videos and photos.

140° Ultra-Wide Angle Lens

Ultra-wide angle lenses paired with the new Sony IMX307(A160/A161) or IMX415(A163) Starvis sensors for superior night time video quality and reduced motion blur on views.

High Quality Recording Capability

The video resolution varies depending on the model number.

Model Number	Single Channel Resolution	Dual Channel Resolution
A160	<ul style="list-style-type: none"> • 1920 x 1080P 30fps • 1280 x 720P 60fps • 1280 x 720P 30fps 	
A161	<ul style="list-style-type: none"> • 1920 x 1080P 60fps • 1920 x 1080P 30fps • 1280 x 720P 60fps • 1280 x 720P 30fps 	<ul style="list-style-type: none"> • 1080P+1080P • 1080P+720P • 720P+1080P • 720P+720P
A163	<ul style="list-style-type: none"> • 3840 x 2160P 30fps • 2560 x 1440P 30fps • 1920 x 1080P 60fps • 1920 x 1080P 30fps • 1280 x 720P 60fps • 1280 x 720P 30fps 	<ul style="list-style-type: none"> • 1440P+1080P • 1080P+1080P

Combined with WDR Technology

A16X dash Camera balances bright and dark areas, displaying objects in consistent and accurate video or images, even in low-light environments. The camera is suitable for wide range-contrast environment.

NOTE:

A163 model has both WDR and HDR functions.

G Sensor / File Protection

In the event of an impact, the camera will automatically 'protect' the recording, stopping the file from being overwritten. Individual files can also be 'protected' when viewed within playback mode.

You can also press the **red** (⚠️) button to manually start the 'protected' recording.

More information about File Protection/Emergency Recording:

- If the file protection/emergency recording starts at the beginning 15 seconds of recording file, both current file and previous recording file will be protected.
- If the file protection/emergency recording starts at the final 15 seconds of recording file, both current file and next recording file will be protected.

Automatic Start / Stop Technology

As soon as the vehicle ignition is turned on, the camera will start to record automatically. When the ignition is turned off, the camera will perform an automatic shutdown process.

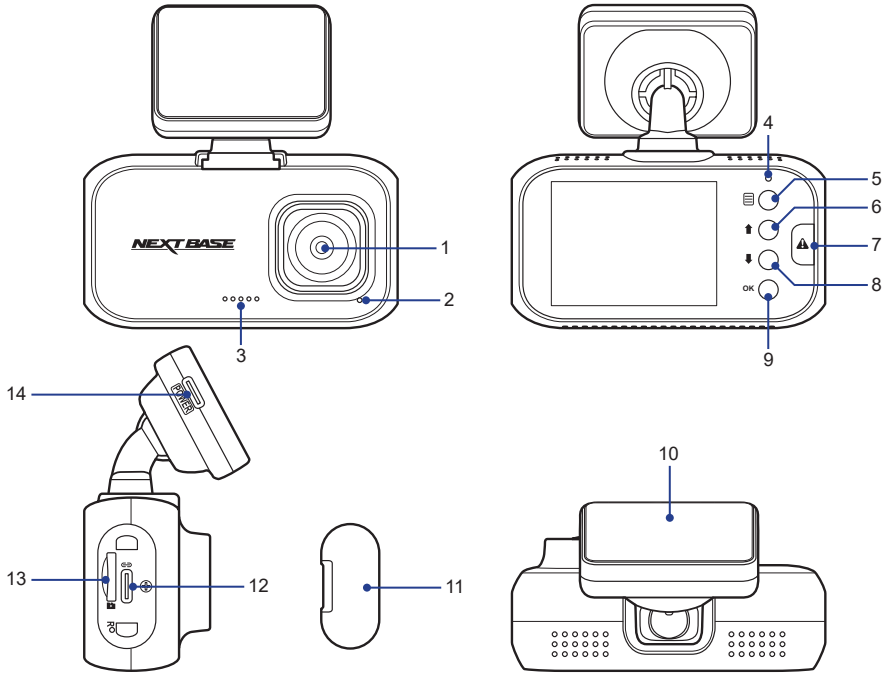
Optional Hardwire Kit with Parking Mode Function

With this function, the camera automatically starts recording when it is triggered by the G-Sensor, keeping your car safe when parked.

Built-in Microphone & Speaker

Record audio to compliment the video recordings.

CONTROLS



1. CAMERA LENS

Wide angle 140°.

2. MICROPHONE

Integrated microphone for audio recording.

3. SPEAKER

Integrated speaker for audio playback.

4 LED INDICATOR

- Red = power on
- Red flashing = recording

5. MENU (☰)

Press to open the OSD menu.

6. UP (↑)

- Recording Mode: Enter the Playback mode.
- Playback Mode: Move to the next file.
- Video Playback Mode: Rewind playback.
- In the Menus: Navigate up within menus.

7. SOS FILE PROTECTION (▲)

'One touch button' to protect current file in event an emergency situation.

8. DOWN (↓)

- Recording Mode: Take a snapshot.
- Playback Mode: Move to the previous file.
- Video Playback Mode: Fast forward playback.
- In the Menus: Navigate down within menus.

9. OK (OK)

- Video Mode:
 - Short press to switch the screen display mode.
 - Long press to manually turn off the camera.
- Playback Mode: Confirm the selection.
- In the Menus: Confirm the selection.

10. GPS BRACKET

Install the bracket to the mounting socket.

11. DUST COVER

USB port and memory card slot located under the dust cover. It helps to keep the components free of dust or other contaminants.

12. USB TYPE-C PORT

Connect the USB cable, the Cabin camera, or the USB cable of the Rear View camera here.

13. SD CARD SLOT

Insert microSD memory card here.

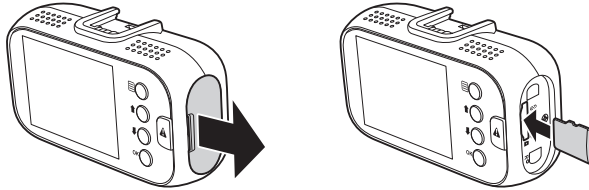
14. USB TYPE-C PORT

Connect the car power cable here.

INSTALLATION

INSERTING THE MEMORY CARD

Remove the dust cover. Then insert the memory card with the gold contacts facing to the front of the camera. Make sure to push the memory card until it clicks into place.



NOTE:

- Do not remove or insert the memory card when the camera is turned on. This may damage the memory card, or recordings within.
- The microSD card is sold separately. The microSD card must have a Class-10 or UHS-1 rating or better, and a capacity between 16GB and 256GB.

Recording Time

The camera supports microSD card up to 256GB (approximately 30 hours record time).

Single Channel			
Mode & FPS SD Card Size	4K @30fps	1440p @30fps	1080p @60fps
32G	2H	4.5H	4H
64G	4H	9H	8H
128G	8H	18H	16H
256G	16H	36H	32H

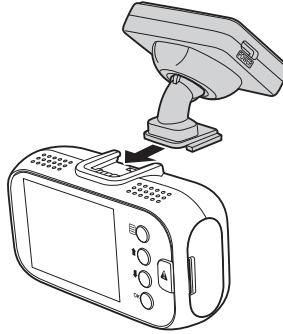
Single Channel			
Mode & FPS SD Card Size	1080p @30fps	720p @60fps	720p @30fps
32G	8H	9H	17H
64G	16H	18H	34H
128G	32H	36H	68H
256G	64H	72H	136H

Dual Channel					
Mode & FPS SD Card Size	1440p+1080p @30fps	1080p+1080p @30fps	1080p+720p @30fps	720p+1080p @30fps	720p+720p @30fps
32G	2H 50Min	4H	6H	6H	9H
64G	6H	8H	11.5H	11.5H	18H
128G	12H	17H	23H	23H	36H
256G	24H	34H	46H	46H	72H

INSTALLING IN VEHICLES

To securely mount the camera on the windshield, do the following:

- 1 Attach the GPS bracket to the camera. Slide it into the mounting socket until you hear a click.

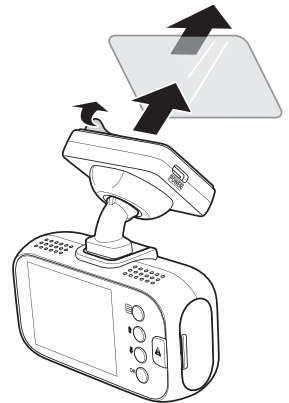


- 2 Wipe clean the chosen area of the windshield with a dry cloth. Then attach the window sticker onto the windshield.
- 3 Peel off the adhesive cover layer from the GPS bracket. Then place and press down the bracket firmly onto the attached window sticker.

NOTE:

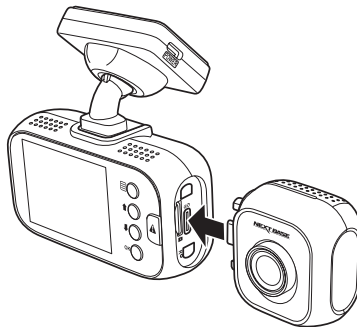
If you plan to install the Cabin camera, make sure the distance should be enough to have view inside the vehicle from the Cabin camera.

- 4 Adjust the camera position if necessary.
Ensure that the road ahead is at the centre of the image and clearly visible on the camera screen.



Installing the Cabin Camera

Remove the dust cover. Then connect the Cabin camera to the USB port.

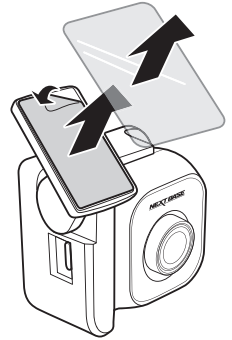


Installing the Rear View Camera

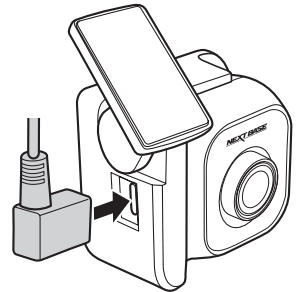
NOTE:

A16X dash cam can only work with A16R.

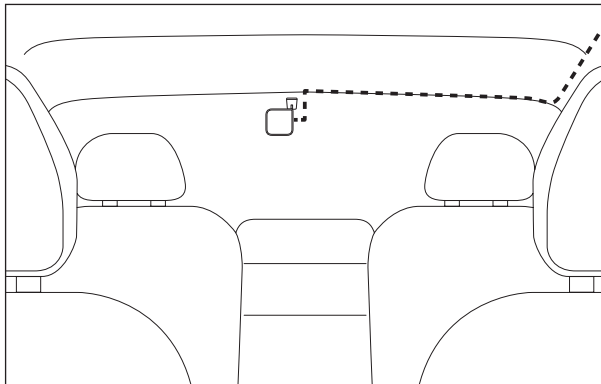
- 1 Wipe clean the chosen area of the rear window with a dry cloth. Then attach the window sticker onto the rear window.
- 2 Peel off the adhesive cover layer from the mounting bracket. Then place and press down the bracket firmly onto the attached window sticker.



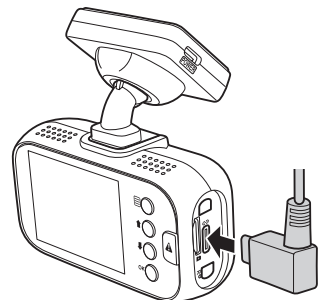
- 3 Connect one end of the USB cable to the USB port of the Rear View camera (A16R).



Make sure the remaining cable routing is properly secured in your vehicle.



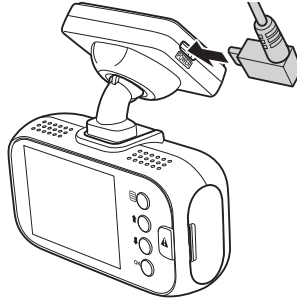
- 4 Connect the other end of the USB cable to the USB port of the camera.



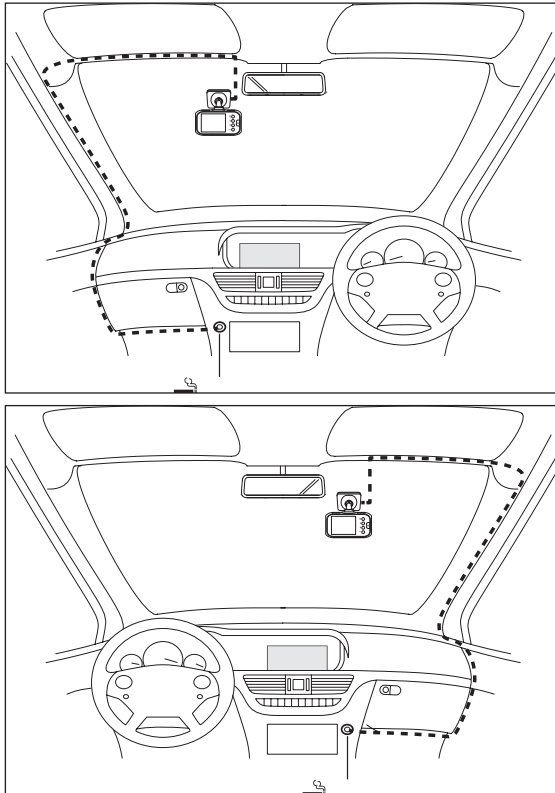
Connecting to Power

Use only the supplied NEXTBASE car adapter to turn on the camera.

- 1 Connect one end of the car adapter to the USB port of the GPS bracket.



- 2 Route the car adapter around the windshield to the 12-24Vdc socket, ensuring that your view is not obstructed, and that the adapter is not a distraction. Then plug the other end of the car adapter to the 12-24Vdc outlet of your vehicle.



Once the vehicle engine is started, the camera automatically turns on and starts recording.

Powering On/Off the Camera Manually

To manually turn on/off the power, press and hold the **OK** button for at least 3 seconds.

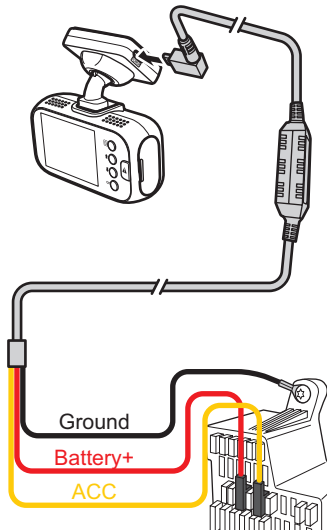
NOTE:

- Your Dash Cam is shipped with the *Screen Saver* function set to Default OFF. This is for ease of initial setup. Once setup is complete, the screen saver should be set to 15 seconds, in order to blank the screen completely whilst driving. This avoids any potential distraction and may be a legal requirement in some countries.
- It is recommended to position your Dash Cam on the passenger side of the car, behind the rear view mirror, as shown above. Whilst the camera needs to be located in a position within the wiper swept area, do not allow the camera to obstruct your vision of the road ahead. Recommended position is no more than 40mm within the wiper swept area. Do NOT mount the camera directly in front of the driver.
- Do not place the Dash Cam in such a way that it may interfere with the deployment of air bags or other safety equipment.
- Adjust any settings or review the recordings whilst stationary, not whilst driving.
- In vehicles where the 12V / 24V output remains on when the ignition is turned off. Please disconnect the camera when not in use.
- When using the camera for the first time, make sure to set the correct date and time settings.

Installing Smart Hardwire Kit

Warning! Do not connect the **red** and **yellow** wires into the same fuse slot.

- 1 Locate the fuse box of your vehicle.
The fuse box location varies depending on your vehicle type.
- 2 Connect the **red** wire to the positive electrode of the fuse adapter.
- 3 Connect the **black** wire to the metal (ground-negative electrode).
- 4 Connect the **yellow** wire to the ACC power supply.

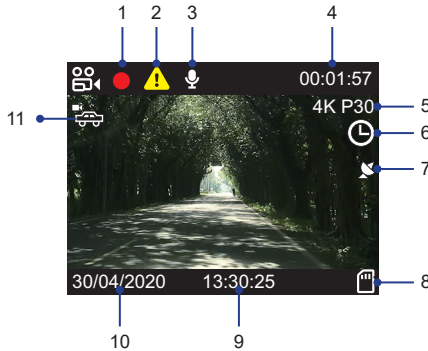


NOTE:

Please be noted the smart hardwire kit will stop working when car battery voltage is too low, it's to prevent over consuming of car battery.

VIDEO MODE

The key below explains the various information displayed on the screen when the camera is in Video mode. Some icons will only be displayed once the relevant function has been selected within the OSD menu, as described below.



1. Recording Status (Blinking Red Icon)

Indicate the video recording is in progress.

2. Emergency Recording

Press the button to activate the Emergency recording.

3. Audio Recording ON

Press the button to mute the recording. It also can be switched OFF in the OSD menu.

4. Recording Time

Display the length of current recording.

5. Resolution

Display the current video resolution.

6. Time-Lapse Recording ON

Can be switched OFF in the OSD menu.

7. GPS Reception Status (Only for A161 or A163)

Indicate the camera is receiving the GPS signal.

NOTE:

If no GPS signals are received after the camera is turned on, a “No GPS” message will appear on the screen.

8. SD Card

Indicate the microSD card is properly inserted into its slot.

9. Time

Display the current time. This setting can be adjusted in the OSD menu.

10. Date

Display the current date. This setting can be adjusted in the OSD menu.

11. Parking Mode ON (Normal Mode (🚗) / Intelligent Mode (🚗))

Can be switched OFF in the OSD menu.

NOTE:

This option will automatically disable when the time-lapse recording is activated.

NORMAL RECORDING

When the vehicle engine starts up, the camera automatically turns on and starts recording. Recording will automatically stop when the engine is switched off. Or, long press the **OK** button to stop recording manually.

Taking Snapshots

During video recording, long press the **↓** button to take snapshot of the current scene.

Single/Dual Camera Display

- Single channel:
Press the **OK** button to turn on/off the screen.
- Dual Channel:
Press the **OK** button to toggle screen view:
 - ✓ Front + Cabin/Rear View camera overlaid



- ✓ Front camera only
- ✓ Cabin/Rear View camera only
- ✓ Screen off

EMERGENCY RECORDING (FILE PROTECTED)

Emergency recording will be activated under the following two situations.

1. G-Sensor event recording: During video recording, if the dash camera detects an impact, it will automatically activate the emergency recording mode.

- If the G-Sensor sensitivity is set to “High Sensitivity”, even minor shocks will be detected.
- If the G-Sensor sensitivity is set to “Low Sensitivity”, it will only detect the significant shocks.
- G-Sensor sensitivity can be adjusted in the OSD menu. See page 18.

2. Manual emergency recording:

- During video recording, press the **▲** button to activate the emergency recording (File Protected) function manually.
- During non-video recording (i.e. in the Playback mode or the OSD menu), press the **▲** button to activate the emergency recording function manually.

NOTE:

An **▲** icon will appear on the screen to indicate the *Emergency Recording* is in progress.

More information about File Protection/Emergency Recording:

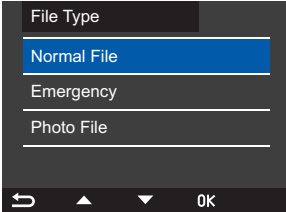
- If the file protection/emergency recording starts at the beginning 15 seconds of recording file, both current file and previous recording file will be protected.
- If the file protection/emergency recording starts at the final 15 seconds of recording file, both current file and next recording file will be protected.

AUTO REPAIR

If the microSD card is unexpectedly removed or power outage, the last recorded video may not be saving correctly and cannot be played on the computer. When re-insert microSD card back to the camera and it is turn on, the system will automatically repair the abnormal video file, so that it can be played normally.

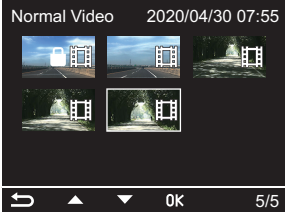
PLAYBACK MODE

During video recording, press the **↑** button to enter the Playback mode. Then press the **↑** or **↓** button to select the file category that you want to browse and press the **OK** button.



PLAYING VIDEOS

Press the **↑** or **↓** button to browse the desired video file. Then press the **OK** button to view the video in full screen.



Normal Videos



Emergency Videos

Preview Mode



Buttons guideline

- Press the **↑** button to delete the selected file.
A confirmation message appears on the screen. Select **OK** to confirm deletion.
NOTE:
You cannot delete the protected files.
- Press the **↓** button to protect the selected file. A lock icon (**🔒**) will appear on the screen to indicate that the file is protected.
To unprotect the file, press the **↓** button again.
- Press the **OK** button to play the video.

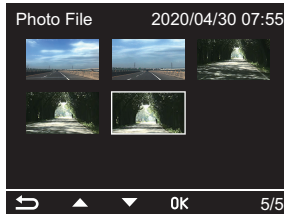
Playback Mode



- Press the **⏮** button to rewind the video playback. Press the **⏮** button again to toggle the playback speed.
- Press the **⏭** button to fast forward the video playback. Press the **⏭** button again to toggle the playback speed.
- Press the **⏸** button to pause the video playback. To resume, press the **⏸** button again.
- Press the **⏹** button to stop the playback.

VIEWING PHOTOS

Press the **⏮** or **⏭** button to browse the desired photo file. Then press the **OK** button to view the photo in full screen.




Preview Mode






- Press the **⏹** button to delete the selected file.
A confirmation message appears on the screen. Select **OK** to confirm deletion.
NOTE:
You cannot delete the protected files.
- Press the **🔒** button to protect the selected file. A lock icon (**🔒**) will appear on the screen to indicate that the file is protected.
To unprotect the file, press the **🔒** button again.

MENU AND SETTINGS

Press the  button to enter the OSD menu.



In general, use the  or  button to select an option and press the **OK** button to confirm. To return to the previous page, press the  button.

MENU OPTIONS

Resolution

Select the recording resolution, this will increase or decrease the quality of the recorded videos.

Loop Recording

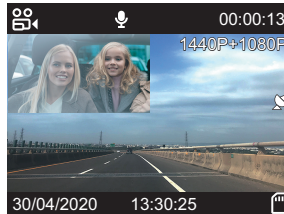
Select the recording time for the individual video files. Once the microSD card is full, the camera will automatically replace the oldest files with new files in a loop to allow continuous recording.

Rear Mirror Display

Turn on/off the display mirroring function when using the Cabin camera. When it is disabled, the image on the Cabin camera screen appears as if the object is flipped horizontally.



Rear Mirror Display ON
(Mirror)



Rear Mirror Display OFF
(Normal)

Exposure

Adjust the exposure level for different light conditions.

WDR (Wide Dynamic Range)

Dynamic range is the ratio of the brightest portion of the image to the darkest portion of the image. When enabled, the system records more details in the shadows while not over-exposing the bright areas. The downside is reduced contrast, the image may look less natural but records more information.

NOTE:

A163 model has both WDR and HDR functions.

Parking Mode

(Only available with optional hardwire kit connected)

Select the parking mode type.

- **Off:** Disable the *Parking Mode* function.
- **Normal Mode:** Perform the interval recording when in *Parking Mode*. When the camera is on and then the car is detected to be switched off (after ACC if power off), the system will automatically switch the recording mode from Normal recording mode to Time-Lapse recording mode. Video files can be selected by different frame rate. Available option: Off, 1fps, 2fps, 5fps, or 10 fps.
- **Intelligent Mode:** Activate the **Intelligent Mode** when in *Parking Mode*. When the camera is on and then the car is detected to be switched off (after ACC if power off), the system will automatically trigger the emergency recording when the camera detects an impact or object movement.

NOTE:

If no event is detected after 1 minute, the camera will return to Standby mode.

Speed Unit

Select whether to record and display speed in KMH or MPH.

G-Sensor

Select the sensitivity level of the G-Sensor. The G-Sensor detects forces which will protect the current recording in the event of a collision. The higher the G-Sensor sensitivity, the less force will be needed to trigger automatic file protection in event of a collision.

Date Stamp

Turn on/off the date stamp shown on the recorded files.

GPS Info Stamp

Turn on/off the GPS co-ordinates and speed stamp shown on the recorded files. When a recording is viewed using the third party GPS players, both the GPS co-ordinates and speed information remain available.

Record Audio

Turn on/off the microphone for video recording.

Screen Saver

Turn on the Screen Saver function to turn off the screen after a chosen period of inactivity. Press any button to reactivate the screen. If the setting is set to **Off**, the LCD screen will always be on.

Date/Time

Adjust the date and time settings.

Time Zone

Select the time zone of your country.

Language

Select your preferred language.

Beep Sound

Turn on/off the beep that sounds when a button is pressed.

Frequency

Set the frequency setting according to the power supply specification used in your country or geographical region. Choosing the correct value will reduce flickering caused by incandescent/fluorescent lamps at night time. The LED traffic lights may still flicker as these use different frequencies.

Format

Format the inserted microSD card. This will delete all content.

Warning! This operation will delete all existing data on the microSD card, including locked files and normal looping recording files! Make sure you back up any important files first.

Format Warning

Turn off or select the duration to remind user to format the microSD card.

Default Setting

Reset the camera to the factory default settings.

Time-Lapse Recording

Disable the time-lapse recording function or select the frame rate for time-lapse video.

Available frame rate option: 100ms, 200ms, 1Sec, 2Sec, 5Sec, 10Sec, 30Sec, or 1Min.

Firmware Version


Display the version number of the currently installed firmware.

UPDATING THE FIRMWARE

- 1 Download the latest firmware from NEXTBASE website (www.next-base.com), and prepare a microSD card.
- 2 Unzip the zipped file and store the firmware ("FWA161.bin" or "FWA163.bin") into the root directory of the memory card.
- 3 Turn off the camera and insert the memory card into its slot.
- 4 Turn on the camera. The firmware upgrade process will start automatically and may take a few minutes to complete. Once the process is complete, the camera will restart automatically.

NOTE:

During the upgrading process, the LED indicator will blink.

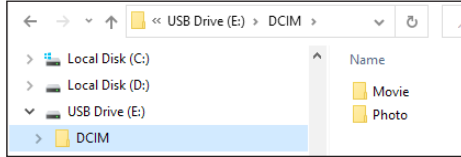
- 5 Press the  button and select **Format** to format the memory card.
- 6 Restart the camera by pressing the **OK** button. See the "Powering On/Off the Camera Manually" section on page 12.

PC CONNECTION

To view the recorded files on your computer, you can do either of the following:

- Remove the memory card from the camera. Then, insert the memory card to the computer memory card slot (if applicable). You can also use a card reader and plug it to the computer USB port.
- Connect the camera to a computer USB port by using the supplied USB cable.

Once connected, open a file browser and navigate to the microSD card.



The recorded files is automatically saved in two folders:

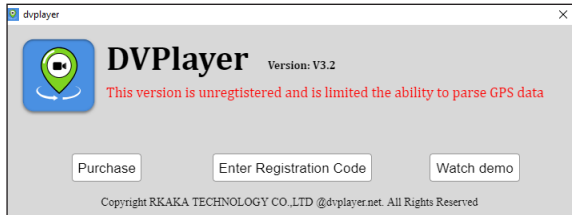
Movie: Normal loop recording video files. For the locked video files, you can find them in the **RO** subfolder.

Photo: Video snapshot files.

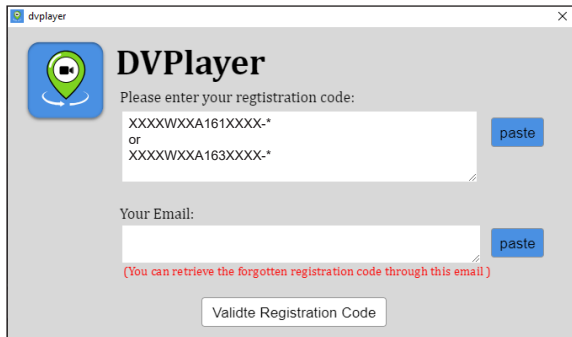
REVIEWING GPS LOG

Software Installation and Registration

- 1 Download the third-party GPS Player software at www.dvplayer.net. Then follow the on-screen instructions to install to the software.
- 2 When launching the GPS Player software for the first time, you will be prompted to enter the registration code. Then click **Enter Registration Code** to continue.



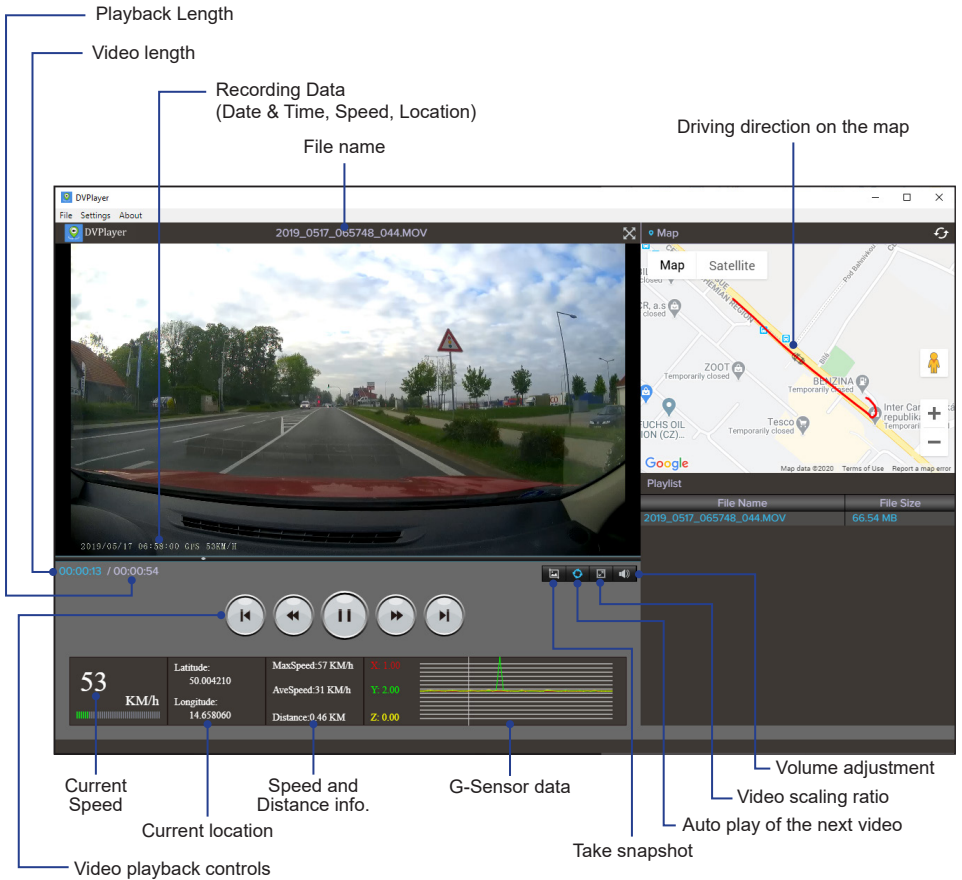
- 3 Enter the registration code and your email in the respective text boxes. Then click **Validate Registration Code**.



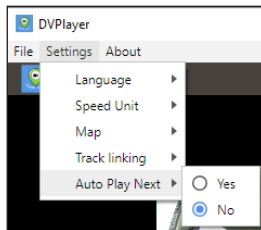
The software is now ready to use.

Video Playback and Viewing GPS Log

From the top panel, click **File > Open**. Then select the video that you want to view.



To configure the software playback settings, simply click **Settings** and perform the necessary changes.



TROUBLESHOOTING

Common troubleshooting tips that you may encounter while using the camera are listed in the table below.

Problem	Solution
The camera does not record.	<ul style="list-style-type: none"> • Be sure to use a microSD card with the size of at least 8GB, Class 10. • Format the memory card using the camera before its initial usage. • Try with a new microSD card.
The camera does not loop record.	Check if the microSD card has enough free space. It may be full of locked files. All files can be deleted quickly by formatting the card in the camera.
Video is blurred.	Remove the protective lens cover (if any), clean the lens, or clean the windshield or rear window.
Video has no sound.	Ensure that the Record Audio setting is set to On . See page 18.
Flicker appears in the recorded video.	Set the correct frequency setting according to the power supply specification used in your country or geographical region. See page 18.
The screen blanks after a few minutes.	Adjust the Screen Saver setting. See page 18.
The camera feels warm when it is operating.	It is common for the camera to feel warm under normal operation.
I have turned on the <i>Parking Mode</i> function and now the camera can't stop the recording.	When the <i>Parking Mode</i> function is enabled, the camera will start a recording whenever motion is detected. To disable the function, firstly turn off the camera and remove the SD card. Then turn on the camera again and set the Parking Mode setting is set to Off within the OSD menu. See page 17.
Video playback is really quick on my PC, not consistent with the driving scene that was recorded.	Set the Time-Lapse Recording setting is set to Off . See page 18.
Video playback is lagged.	To play the high resolution video (such as 4K/2K), your computer specifications is very important. If your computer does not meet the minimum requirements, you will experience lagging during video playback. It is recommended to play back the high resolution video with i7 CPU grade computer.
Video files cannot be played on my computer.	<ul style="list-style-type: none"> • This can happen due to a bad quality microSD card or a corrupted card format. Please format or replace the microSD card. • The video files may not be compatible with your computer if suitable playback software is not installed.
The camera beeps and indicates it was a failed card.	In general, the memory card lifespan for the camera is about six months and may be subject to data corruption or loss due to static electricity and/or external voltage. For this reason, we highly recommend user to copy and save important data to external media (HDD, USB drive, etc.). It is strongly recommended to format the memory cards to minimize memory card error.
Unresolved Issues	If the above problem persists, reset the camera to the default settings and try again. Otherwise, call your local support center.
Having problem with connecting the hardwire kit to the fuse box	Ensure that the color-coded wires are properly connected: <ul style="list-style-type: none"> • GND = Black wire=Ground • VCC = Red wire = Permanent live The camera will switch between <i>Normal</i> and <i>Parking</i> mode depending on alternator voltage or battery voltage. • ACC = Yellow wire = Turned on when the vehicle engine on The camera will switch to <i>Normal</i> mode when it is turned on.